A firefighter in full protective gear is shown from the side, holding a FLIR thermal imaging device. The device's screen displays a bright yellow and red thermal image, indicating heat. The background is dark and filled with falling sparks or embers, suggesting a fire scene. The overall tone is dramatic and professional.

Teledyne FLIR
Public Safety Solutions

THERMAL FIREFIGHTING

 **TELEDYNE**

K-SERIES

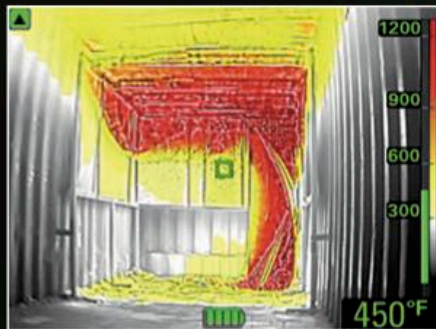
AFFORDABLE, DEPENDABLE, ESSENTIAL

Just like your air pack, radio, and protective gear, FLIR TICs are essential tools for firefighting. With a TIC in hand, you can attack fires more strategically, maneuver through smoke more easily, and save lives. And with a range of technologies and prices from the FLIR K1 Situational Awareness Camera through the NFPA®-compliant FLIR K65, it's easier than ever for departments to afford to issue a TIC to every firefighter.

FSX® - FLEXIBLE SCENE ENHANCEMENT

Digital image processing enhances the thermal image in the camera, producing an ultra-sharp view with more scene detail. FSX makes it easier for firefighters to find their way in smoke-filled rooms, even in scenes with extreme temperature dynamics.

WITH FSX



WITHOUT FSX





When NFPA® Compliance is a must

FLIR K65 TIC IS THE ANSWER

FLIR designed the K65 thermal imaging camera with sealed connectors and a secured battery for full compliance with the NFPA 1801:2021 Standard for Thermal Imagers covering usability, image quality, and durability. This advanced TIC produces detail-rich 320 x 240 pixels thermal images to help you navigate easier in smokey conditions. Plus, the K65 can record and store up to 200 photos or video files you can play back on the camera or review from a computer for post-fire analysis.



FULL PROTECTION:

FLIR'S 2-5-10 Warranty

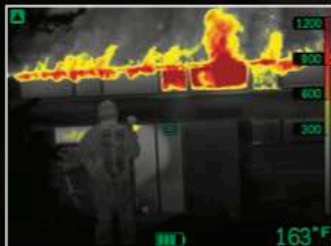
- 2 Years Battery
- 5 Years Parts and Labor
- 10 Years Detector



IMAGE MODES

TI BASIC

For initial fire attack and rescue operations; colors represent temperature.



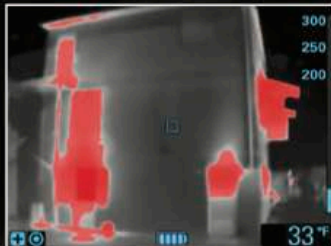
BLACK & WHITE

Same representations of temperature as the TI Basic mode, but in grayscale.



HEAT DETECTION

Used for finding hotspots. The hottest 20% of the scene is colored red.



FIRE

For scenes with higher background temps where open flames are present, particularly in structural fires.



SEARCH & RESCUE

For use with lower temperature situations, such as initial rescue efforts after traffic accidents, searches in wooded areas, etc.



COLD DETECTION*

Colorizes coldest 20% of the scene to aid in finding drafts and determining air flows.

* K2 only



ADVANCED TECHNOLOGY WITHOUT COMPROMISE

The FLIR Kx5-Series with FSX[®] displays detail-rich imagery on a large, bright 4-inch LCD to help you navigate the smokiest environments, instantly distinguish people and room features, and make critical decisions.

FULL PROTECTION:

FLIR'S 2-5-10 Warranty

- 2 Years Battery
- 5 Years Parts and Labor
- 10 Years Detector



FLIR K65

320 × 240 pixel detector

NFPA 1801 COMPLIANT*

With fully-sealed connectors and a secured battery, the K65 is designed to be compliant with the NFPA 1801:2021 Standard for Thermal Imaging covering usability, image quality, and durability.

*National Fire Protection Association and NFPA are registered trademarks of the National Fire Protection Association. The NFPA does not test, certify, or approve any products.



FLIR K55

320 × 240 pixel detector

HIGH-PERFORMANCE

The K55 produces uncompromising, detail-rich imagery you can view in real-time, save as JPEGs, or record as video. Choose one of five image modes designed to help you better navigate heavy smoke, find hidden hot spots, or search for potential victims.



FLIR K45

240 × 180 pixel detector

RUGGED AND RELIABLE

The K45 meets the challenges of intense fire scenes with a drop-resistant, water-resistant design made to operate in 500°F heat for up to five minutes. This affordable TIC saves thermal JPEGs you can play back in the camera or download for later review.

VISION FOR EVERY FIREFIGHTER

FLIR is on a mission to make TICs standard-issue equipment for every firefighter. With modern fires progressing faster than ever, equipping each crew member with a TIC could be the difference between disorientation and life-saving vision.

FULL PROTECTION:

FLIR'S 2-5-10 Warranty

- 2 Years Battery
- 5 Years Parts and Labor
- 10 Years Detector



FLIR K53

320 x 240 pixel detector

PREMIUM FEATURES, LOWER PRICE

The K53 combines simplified, one-button controls with advanced features such as FSX enhancement and smooth, 60 Hz image capture to provide reliable vision at an affordable price.



FLIR K33

240 x 180 pixel detector

FIREPOWER SIMPLIFIED

Start the K33 in TI-Basic mode with just a press of the button and freeze the image on-screen with a trigger-pull. This affordable handheld produces crisp imagery with FSX enhancement, helping you navigate fire scenes safely.



K2 Mount



FLIR K2

160 x 120 pixel detector

EASY TO HANDLE

The K2 offers a glove-friendly, one-button control for quick access to the simplified interface, so you can focus on the challenging, fast-changing job at hand. Lightweight but rugged, the K2 can withstand a two-meter drop onto concrete, is water resistant (IP67), and is fully operational up to 500°F (three minutes).

Specifications

MODEL	K1	K2	K33	K45	K53
IR resolution	160 × 120 pixels	160 × 120 pixels	240 × 180 pixels	240 × 180 pixels	320 × 240 pixels
Thermal sensitivity	<100 mK	<100 mK @ 30°C (86°F)	<40 mK @ 30°C (86°F)	<40 mK @ 30°C (86°F)	<30 mK @ 30°C (86°F)
Image or contrast optimization	Digital image enhancement with MSX®	Digital image enhancement with FSX®			
Field of view (FOV)	57° × 44°	47° × 35°	51° × 38°	51° × 38°	51° × 38°
Image storage	Yes	No	No	Up to 200 JPEG images on internal flash memory	Up to 200 JPEG images on internal flash memory (dependent on the number of saved video clips)
Video storage	No	No	No	No	200 files in total, with a maximum duration of 5 min per video clip
In-camera video recording	No	No	No	No	MPEG-4 to internal flash memory
IMAGE PRESENTATION					
Display	Backlit 2.4 in, 320 × 240 pixel LCD	Backlit 3 in, 320 × 240 pixel LCD	Backlit 4 in, 320 × 240 pixel LCD		
IR image modes	T1 Basic (White hot with isotherm), White hot, Iron	Basic firefighting mode, Cold detection mode, Building analysis mode, Black-and-white firefighting mode, Fire mode, Search and rescue mode, Heat detection mode	T1 Basic firefighting mode	T1 Basic firefighting mode, Black-and-white firefighting mode, Fire mode, Search and rescue mode, Heat detection mode, Thumbnail gallery	T1 Basic firefighting mode
Auto range	No	Yes, Non-selectable	Yes, selectable on/off using FLIR Tools		
MEASUREMENT					
Object temperature range	High Gain Mode: -10°C to 140°C (14°F to 284°F) Low Gain Mode: -10°C to 400°C (14°F to 752°F) (at room temperature)	-20°C to 150°C (-4°F to 302°F) 0°C to 500°C (32°F to 932°F)	-20°C to 150°C (-4°F to 302°F) 0°C to 650°C (32°F to 1,202°F)		
Accuracy	Accuracy for ambient temperatures of 10°C to 35°C (50°F to 95°F): High gain mode, ±5°C or ±5% Low gain mode, ±10°C or ±10%	±4°C (±7.2°F) or ±4% of reading for ambient temperature, 10°C to 35°C (50°F to 95°F)			
Spotmeter	Center spot	1 spotmeter	1 spotmeter	1 spotmeter	1 spotmeter
SAFETY TESTING					
NFPA 1801:2021 compliant	No	No	No	No	No
POWER SYSTEM					
Battery type	Li-ion, 3.7 V rechargeable	Li Ion, >4 hours operating time			
Charging time	4 hours to 90%, 6 hours to 100%	2.5 h to 90% capacity	2 hours to 85% capacity, status indicated by LEDs		
ENVIRONMENTAL DATA					
Operating temperature range	10°C to 90°C (14°F to 194°F) for up to 10 min, flashlight on -10°C to 115°C (14°F to 239°F) for up to 2 min, flashlight on	-10°C to 55°C (14°F to 131°F) 85°C (185°F): 15 min 150°C (302°F): 10 min 260°C (500°F): 3 min	Standard: -20°C to 85°C (-4°F to 185°F) Up to 150°C (302°F): 15 min Up to 260°C (500°F): 5 min		
Storage temperature range	-30°C to 55°C (-22°F to 131°F)	-40°C to 70°C (-40°F to 158°F)	-40°C to 85°C (-40°F to 185°F)		
Humidity (operating and storage/relative)	0°C to 37°C (32°F to 99°F) 37°C to 45°C (99°F to 113°F) 45°C to 55°C (113°F to 131°F)	IEC 60068-2-30/24 h 95% relative humidity 25°C to 40°C (77°F to 104°F) / 2 cycles 95% relative humidity 25°C to 40°C (77°F to 104°F) non-condensing			
Encapsulation, shock, vibration, and drop	IP67 (IEC 60529), 25 g (IEC 60068-2-27), 2 g (IEC 60068-2-6), 2 m (6.6 ft)	IP 67 (IEC 60529), 25 g (IEC 60068-2-27), 2 g (IEC 60068-2-6), 2.0 m / 6.6 ft, on concrete floor (IEC 60068-2-31)	IP 67 (IEC 60529), 25 g (IEC 60068-2-27), 2 g (IEC 60068-2-6), 2.0 m / 6.6 ft, on concrete floor (IEC 60068-2-31)		
PHYSICAL DATA					
Camera weight, incl. battery	0.410 kg (0.904 lb)	0.7 kg (1.54 lb)	1.1 ±0.05 kg (2.4 ±0.1 lb)		
Camera size (L × W × H)	208 × 85 × 65 mm (8.19 × 3.3 × 2.6 in)	250 × 105 × 90 mm (9.8 × 4.1 × 3.5 in)	120 × 125 × 280 mm (4.7 × 4.9 × 11 in)		
PACKAGING					
Contents	K1 infrared camera, printed documentation, wrist strap lanyard, USB-C to USB-A cable, tactical pouch	Infrared camera, battery (2×), battery charger, lanyard strap, power supply, USB cable	Infrared camera, hard transport case, battery (2×), battery charger, power supply, retractable lanyard, carabiner strap, USB cable, printed documentation		
OPTIONAL ACCESSORIES					
	Hard transport case, carabiner strap, retractable lanyard, extra batteries, in-truck charger, car charger, cigarette lighter adapter kit, tripod adapter				

Specifications Cont.

MODEL	K55	K65	Scion PTM
IR resolution	320 × 240 pixels		320 × 256 or 640 × 480 pixels
Thermal sensitivity	<30 mK @ 30°C (86°F)		N/A
Image or contrast optimization	Digital image enhancement with FSX	Digital image enhancement with FSX	N/A
Field of view (FOV)	51° × 38°	51° × 38°	12° × 9°, 18° × 13°, or 31° × 24°
Image storage	Up to 200 JPEG images on internal flash memory (dependent on the number of saved video clips)	Up to 200 JPEG images on internal flash memory (dependent on the number of saved video clips)	2 GB Internal storage Optional micro SD card (up to 128 GB)
Video storage	200 files in total, with a maximum duration of 5 min per video clip	200 files in total, with a maximum duration of 5 min per video clip	
In-camera video recording	MPEG-4 to internal flash memory	MPEG-4 to internal flash memory	
IMAGE PRESENTATION			
Display	Backlit 4 in, 320 × 240 pixel LCD		N/A
IR image modes	T1 Basic firefighting mode, Black-and-white firefighting mode, Fire mode, Search and rescue mode, Heat detection mode, Thumbnail gallery	T1 Basic NFPA firefighting mode, Black-and-white firefighting mode, Fire mode, Search and rescue mode, Heat detection mode, Thumbnail gallery	Scouting, Picture-in-Picture, Lock Span mode
Auto range	Yes, selectable on/off using FLIR Tools		N/A
MEASUREMENT			
Object temperature range	-20°C to 150°C (-4°F to 302°F) 0°C to 650°C (32°F to 1,202°F)		N/A
Accuracy	±4°C (±7.2°F) or ±4% of reading for ambient temperature, 10°C to 35°C (50°F to 95°F)		N/A
Spotmeter	1 spotmeter	1 spotmeter	None
SAFETY TESTING			
NFPA 1801:2021 compliant	No	Yes	No
POWER SYSTEM			
Battery type	Li Ion, > 4 hours operating time		6x CR123A 3V Lithium battery, up to 4.5 hours at 20°C
Charging time	2 hours to 85% capacity, status indicated by LEDs		N/A
ENVIRONMENTAL DATA			
Operating temperature range	-20°C to 85°C (-4°F to 185°F) 150°C (302°F): 15 min, 260°C (500°F): 5 min		-20°C to 50°C (-4°F to 122°F)
Storage temperature range	-40°C to 85°C (-40°F to 185°F)		-40°C to 70°C (-40°F to 158°F)
Humidity (operating and storage/relative)	IEC 60068-2-30/24 h 95% relative humidity 25°C to 40°C (77°F to 104°F) 2 cycles 95% relative humidity 25°C to 40°C (77°F to 104°F) non-condensing		N/A
Encapsulation, shock, vibration, and drop	IP 67 (IEC 60529), 25 g (IEC 60068-2-27), 2 g (IEC 60068-2-6), 2.0 m/6.6 ft on concrete floor (IEC 60068-2-31)		IP67 waterproof, 2 m drop
PHYSICAL DATA			
Camera weight, incl. battery	1.1 ±0.05 kg (2.4 ±0.1 lb)		565 g/1.25 lbs (PTM 166 model)
Camera size (L × W × H)	120 × 125 × 280 mm (4.7 × 4.9 × 11 in)		227 × 76.8 × 60.5 mm (9 × 3 × 2.4 in)
PACKAGING			
Contents	Infrared camera, hard transport case, battery (2x), battery charger, power supply, retractable lanyard, carabiner strap, USB cable, printed documentation	Infrared camera, hard transport case, battery (2x), battery charger, power supply, retractable lanyard, USB cable, carabiner strap, Torx screwdriver, printed documentation	Scion, battery tray, 6xCR123, USB-C cable, black MOLLE pouch, Quick Start Guide
OPTIONAL ACCESSORIES			
Hard transport case, carabiner strap, retractable lanyard, extra batteries, in-truck charger, car charger, cigarette lighter adapter kit, tripod adapter			Rechargeable battery kit (GPX310)



FLIR Truck Charger

Optional

POWER ON THE GO

FLIR in-truck chargers help ensure your Kxx Series TIC and spare battery are always powered up and ready to go.